



Southwold Primary & Nursery School



Southwold Home School Agreement

'Be all you can be and together we will shine.'

Southwold Primary and Nursery School is committed to creating a happy, positive environment where all children thrive academically and socially. Our children will become confident, independent learners who are determined to succeed and have a love for life and learning.

We believe everyone in our school should demonstrate respect for themselves, their peers and the wider community, taking increasing responsibility for being the very best they can be.

We are a values based school and this Home School Agreement is presented in a way that enables the child, the parent and the school to see their roles and responsibilities with regard to our six core values.

Proud to be part of The White Horse Federation Multi-Academy Trust

Tel: 01793 818603 • @WhiteHorseFed • www.twhf.org.uk



ABOUT OUR VALUES

Determination



I will always be ready to learn and willing to have a go.
I will grow my learning muscles and build my independence.

We will encourage your child to achieve his/her potential in all aspects of school life.



We will build learning power by teaching children strategies to attempt all tasks with a growth mindset.



I will encourage my child to complete homework and maximise home learning opportunities.
I will support my child with positive praise and help them to learn from their mistakes or tasks they find hard.

Happiness



I will tell a grown up if something is upsetting me.



We will provide a safe, caring and stimulating environment where your child feels valued as an individual.



I will let the school know of any problems which might affect my child's work or behaviour.

Responsibility



I will work to the best of my ability and allow others to do the same.
I will take responsibility for my own learning and behaviour.



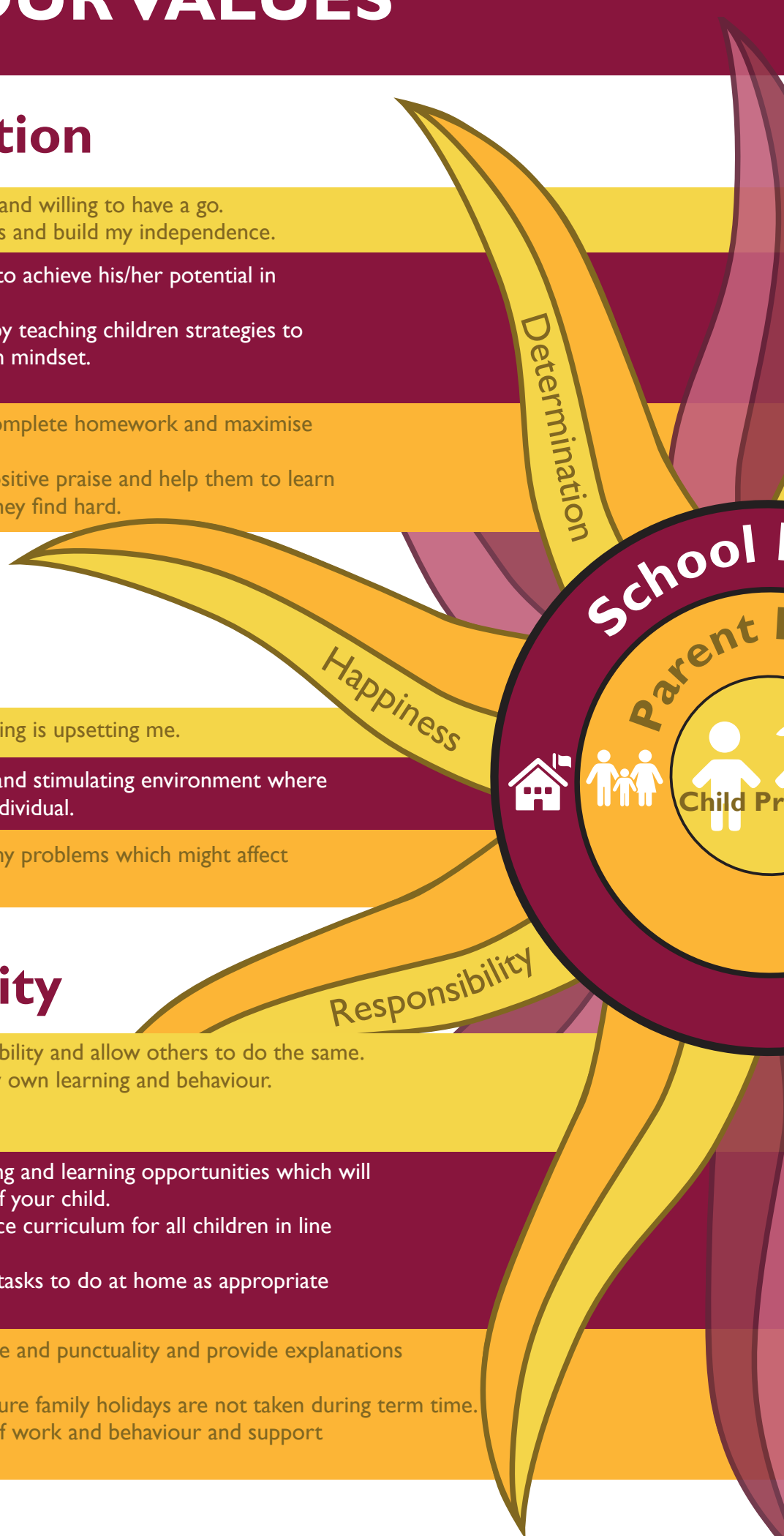
We will provide quality teaching and learning opportunities which will support the individual needs of your child.

We will provide a broad balance curriculum for all children in line with national guidelines.

We will provide your suitable tasks to do at home as appropriate to their age and/or ability.





I will ensure regular attendance and punctuality and provide explanations for any absences.
I will make every effort to ensure family holidays are not taken during term time.
I will support high standards of work and behaviour and support the behaviour policy.






Honesty


I will tell the truth and follow the school rules.
I will tell my teacher if I need help with my work. 

We will meet with parents to discuss individual concerns.
We will keep parents and guardians informed of changes to school policy and other school matters. 
We will communicate in a timely manner via ParentMail, letter, email or the school website.

I will attend parent/teacher consultations.
I will ensure the school has up to date information for emergency contacts
I will check emails and the school website to help achieve paperless communication. 


Positivity


I will have pride in myself and my school. 


We will model a positive attitude to school life and our relationship with children and parents. 

I will encourage a positive attitude towards my child's education. 

Respect

I will listen to my classmates and adults, showing respect to everyone in school and at home.
I will respect the feelings and property of other people at school and in the wider community. 

We will maintain a code of conduct which fosters a caring, secure and disciplined environment.
We will model a respectful relationship with all members of the school community. 
We will care for your child as a valued individual.

I will make sure we use respectful language when talking about school with our children.
I will ensure that my child is wearing school uniform and has the appropriate equipment needed for school. 



Southwold Primary and Nursery School is about to embark on a new adventure and create a Parent Council.

Would you like to:

Meet other parents, share ideas and give feedback to the school?

Be part of a group that can contribute to school decision making?

Help develop the partnership between Southwold parents and the school?

Advise the school leadership of parents' views?

Please Contact us:

www.southwoldschool.org • Tel: 01869 324061

Email: office.2607@southwold.oxon.sch.uk